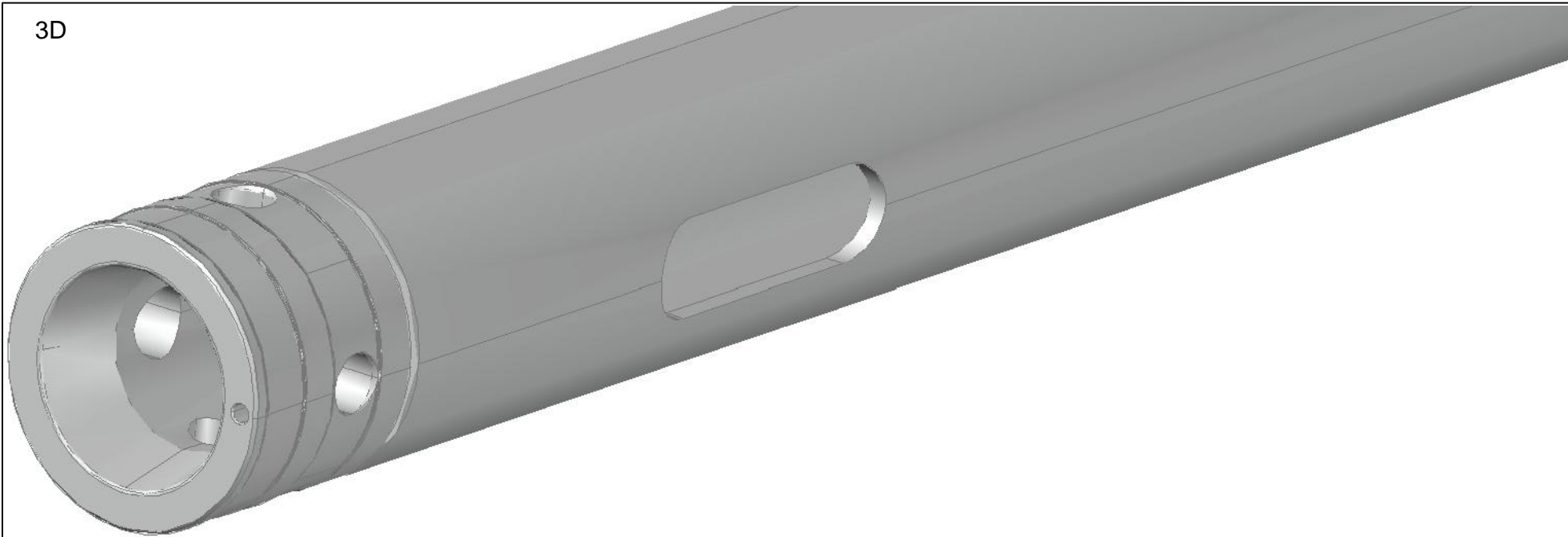


NOTE:
 DIMENSIONS UNLESS OTHERWISE SPECIFIED $\pm 0,5$ MM
 DIMENSIONS UNLESS OTHERWISE SPECIFIED $\pm 0,1^\circ$
 FREE OF BURS, NO SHARP EDGES ALLOWED.

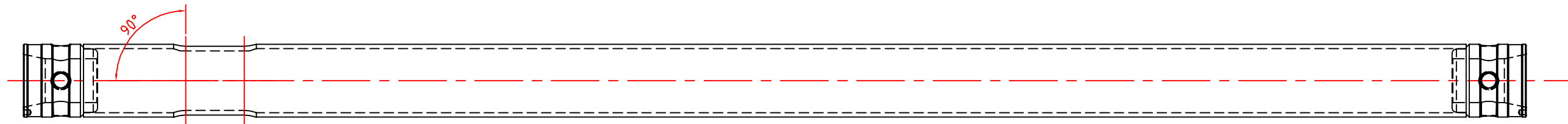
QSR00974

PART NR.	MATERIAL	WORKING LENGTH	CUT LENGTH	REMARK
03	1 TUBE ROUND 48.3X3	701.7	723.7	-
02	1 ASSY TUBE ROUND 48.3X3 LEFT	920.0	1000.0	LEFT, see page 3
01	1 ASSY TUBE ROUND 48.3X3 RIGHT	920.0	1000.0	Right, see page 2

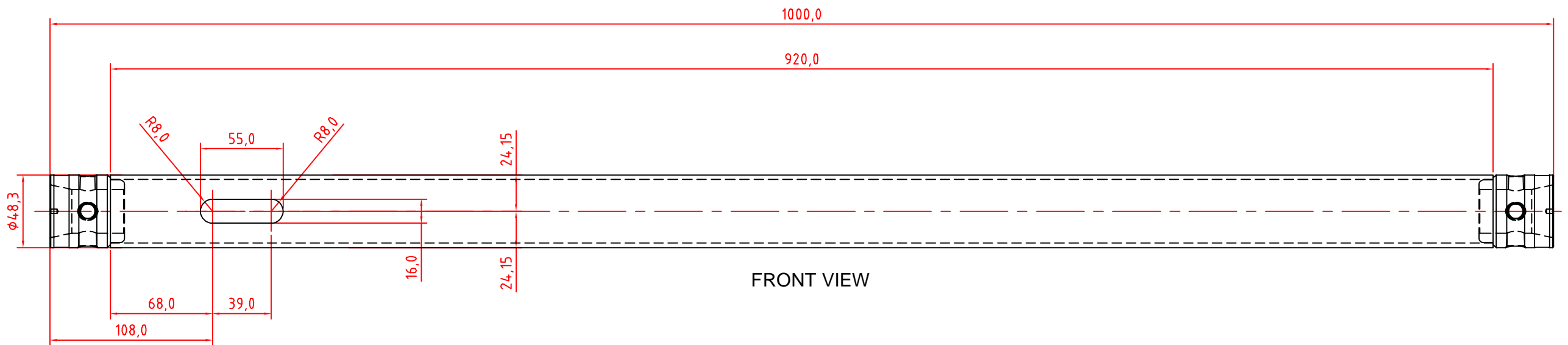
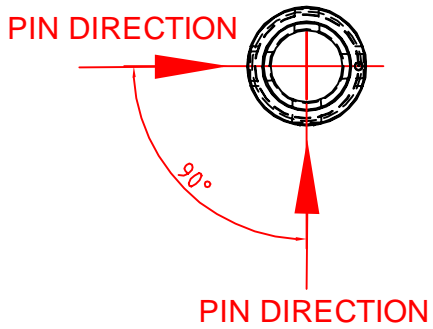
	DRAWN BY: CORINA	DATE: 06.10.2016
	MOD. BY:	DATE MOD.:
	UNIT MEASURE: MM	TREATMENT:
	CAT.NR.: 111550755	REVISION:
DESCRIPTION:	ART.NR.: 111550755	STATUS:
H-FRAME 100X075CM TUBE 48X3MM		
<small>THE INFORMATION CONTAINED IN THIS DRAWING IS THE SOLE PROPERTY OF PROLYTE PRODUCTS. ANY REPRODUCTION IN PART OR WHOLE WITHOUT THE WRITTEN PERMISSION OF PROLYTE PRODUCTS IS PROHIBITED.</small>		



Canalul se prelucreaza dupa ce se sudeaza bosses-ul (item 2)



TOP VIEW



FRONT VIEW

NOTE:
 DIMENSIONS UNLESS OTHERWISE SPECIFIED $\pm 0,5\text{MM}$
 DIMENSIONS UNLESS OTHERWISE SPECIFIED $\pm 0,1^\circ$
 FREE OF BURS, NO SHARP EDGES ALLOWED.

ASSY TUBE ROUND 48X3, RIGHT, FOR 111550755 (QSR00974)

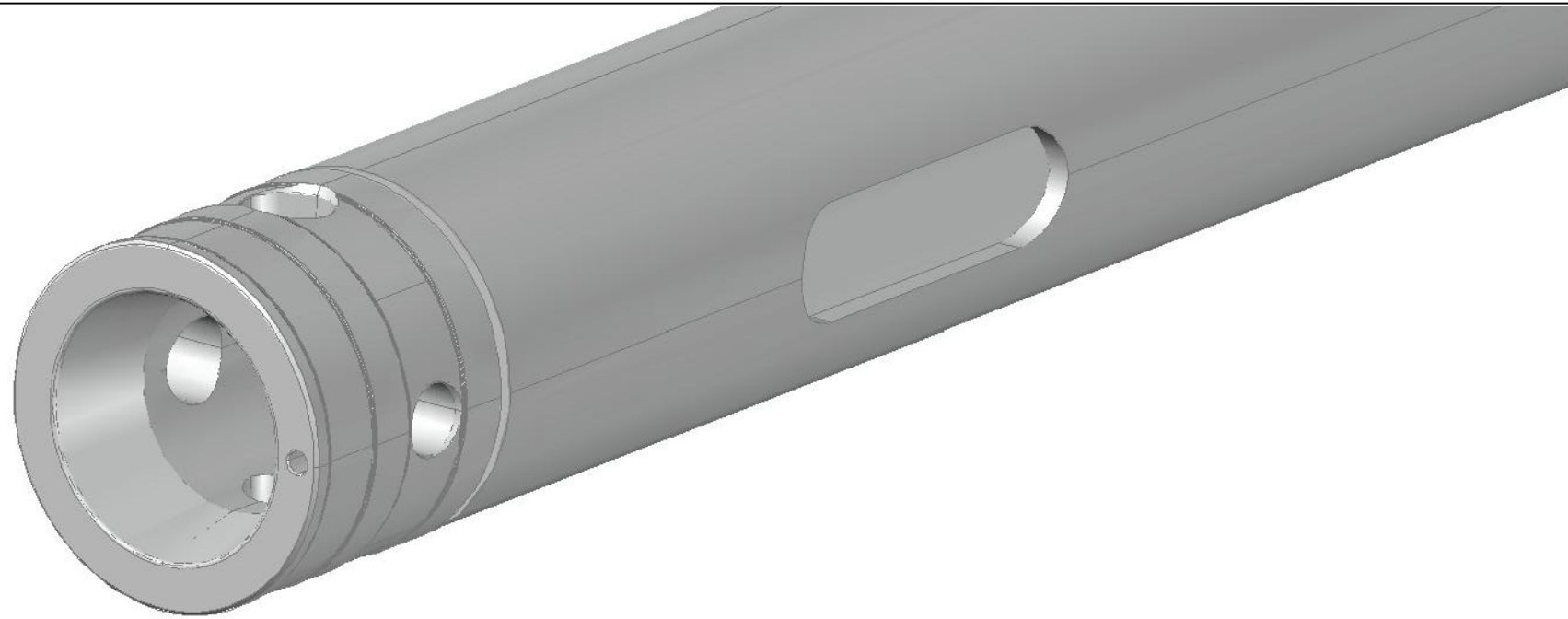
	DRAWN BY: CORINA	DATE: 16.11.2016
	MOD. BY:	DATE MOD.:
	UNIT MEASURE: MM	TREATMENT:
	CAT.NR.: -	REVISION:
ART.NR.: -	STATUS:	

ASSY TUBE ROUND 48X3, RIGHT, FOR 111550755 (QSR00974)

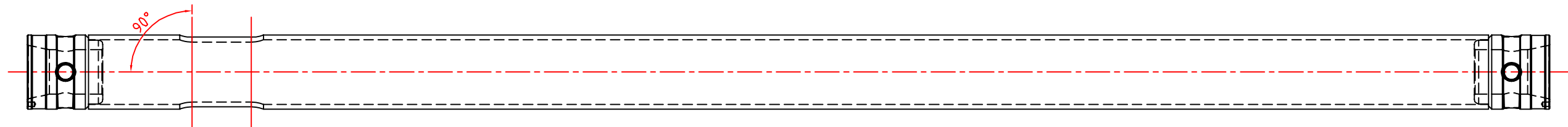
THE INFORMATION CONTAINED IN THIS DRAWING IS THE SOLE PROPERTY OF PROLYTE PRODUCTS. ANY REPRODUCTION IN PART OR WHOLE WITHOUT THE WRITTEN PERMISSION OF PROLYTE PRODUCTS IS PROHIBITED.



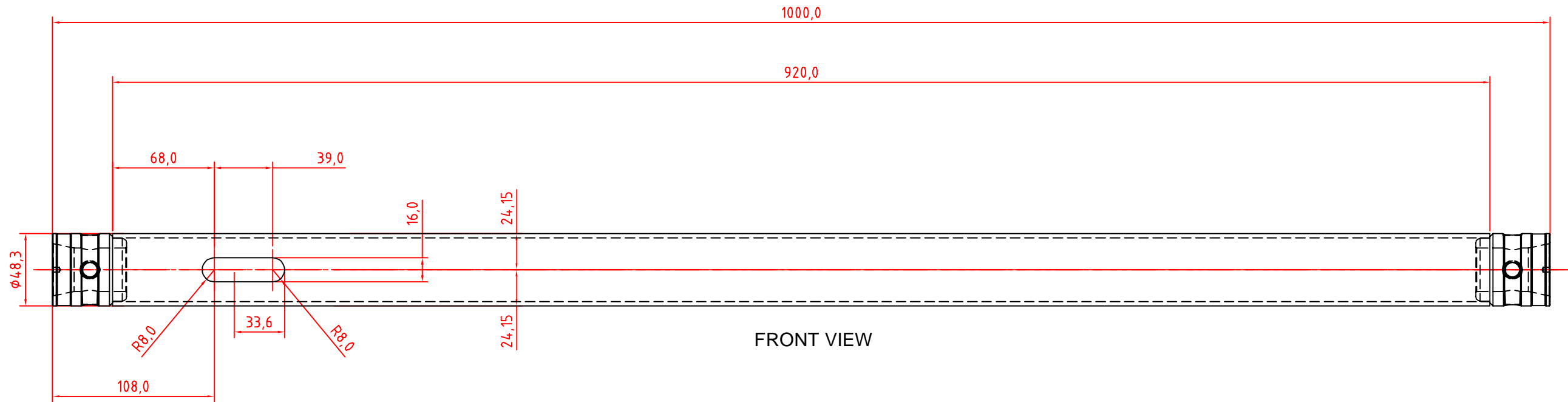
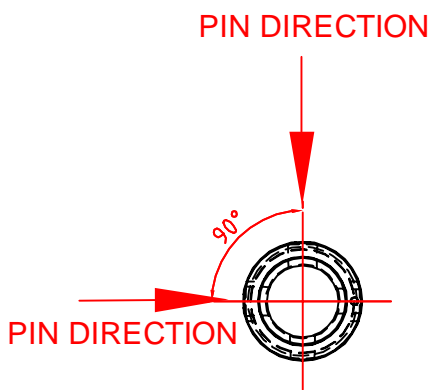
PART NR.	MATERIAL	WORKING LENGTH	CUT LENGTH	REMARK
03 2	INTD-KOPB.48X3DP 90DGR	-	-	144601385 (260030601)
01 1	TUBE ROUND 48.3X3	920.0	1000.0	EN AW 6082 T6



Canalul se prelucreaza dupa ce se sudeaza bosses-ul (item 2)



TOP VIEW



FRONT VIEW

NOTE:
 DIMENSIONS UNLESS OTHERWISE SPECIFIED $\pm 0,5\text{MM}$
 DIMENSIONS UNLESS OTHERWISE SPECIFIED $\pm 0,1^\circ$
 FREE OF BURS, NO SHARP EDGES ALLOWED.

ASSY TUBE ROUND 48X3, LEFT, FOR 111550755 (QSR00974)

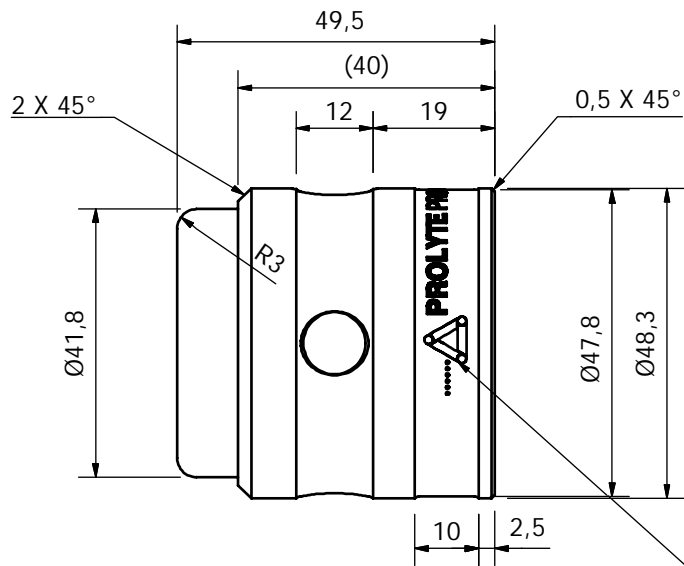
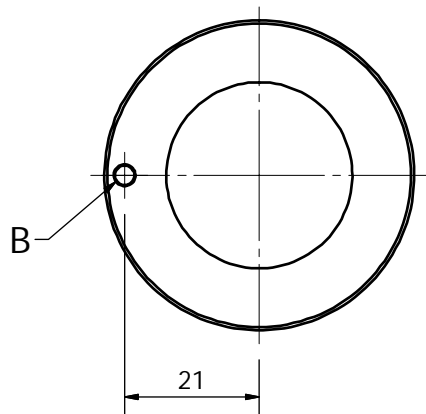
	DRAWN BY: CORINA	DATE: 16.11.2016
	MOD. BY:	DATE MOD.:
	UNIT MEASURE: MM	TREATMENT:
	CAT.NR.: -	REVISION:
ART.NR.: -	STATUS:	

ASSY TUBE ROUND 48X3, LEFT, FOR 111550755 (QSR00974)

THE INFORMATION CONTAINED IN THIS DRAWING IS THE SOLE PROPERTY OF PROLYTE PRODUCTS. ANY REPRODUCTION IN PART OR WHOLE WITHOUT THE WRITTEN PERMISSION OF PROLYTE PRODUCTS IS PROHIBITED.

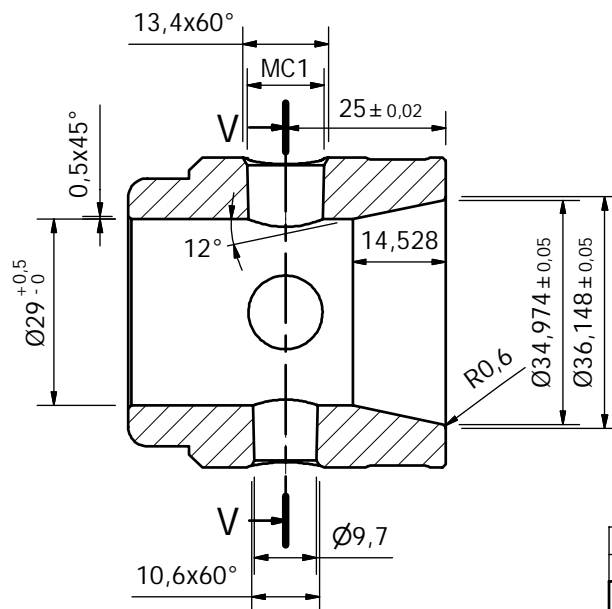
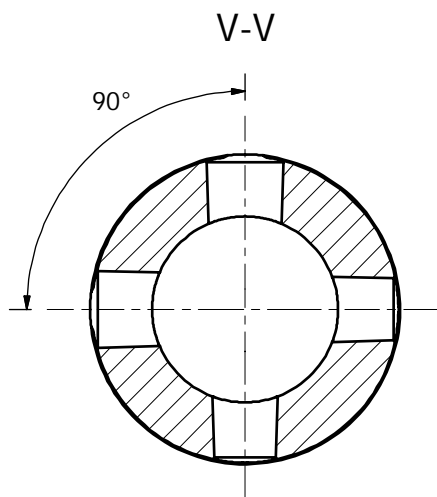
AC

PART NR.	MATERIAL	WORKING LENGTH	CUT LENGTH	REMARK
03 2	INTD-KOPB.48X3DP 90DGR	-	-	144601385 (260030601)
01 1	TUBE ROUND 48.3X3	920.0	1000.0	EN AW 6082 T6

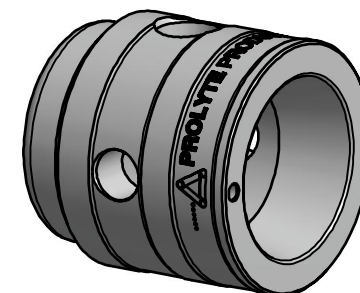
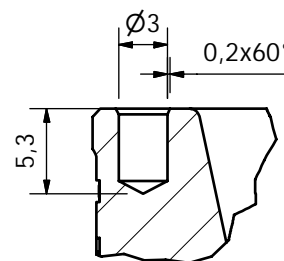


PROLYTE PRODUCTS* M XX YY .. C
 "M" = machine number
 "XX" = Week number
 "YY" = last digits of the year
 ".." = supplier distinctive unique identification mark (2 dots)
 "C" = number of 3.1 certificate (ex.: original batch number "xxxxxx" from the 3.1 certificate will be renamed and written on it "1", for the first batch number used in production on the current year; the numbers will be consecutive starting with 1)

Midden tekstlength in hartlijn van het conisch gat
 (Middle of the text length is in the middle axis of the conical hole)



B (3 : 1)



DIMENSION (40) IS MEASURED FROM
 FRONTSIDE COUPLER AND MAINTUBE 48,3X3
 WHEN ASSEMBLED.

ITEM	QTY	ARTICLE NO.	DESCRIPTION	MATERIAL	SIZE
1	1	144601385	CONICAL COUPLER 48X3 DUAL PIN 90DGR	EN AW-6082 T6	49,50
			DRAWN BY : Administrator	DATE : 09/16/2010	
			MOD. BY : cghigeanu	DATE MOD. : 10/24/2016	
			UNIT MEASURE : mm	TREATMENT :	
			DESCRIPTION : CONICAL COUPLER 48X3 DUAL PIN 90DGR		
			Drawing Revision Note:		
SCALE : 1.2			ARTICLE NO : 144601385		STATUS DRAWING
Tolerances according : ISO..... unless otherwise specified.			Catalogue number: 144601385		Released
The Information contained in this drawing is the sole property of Prolyte Group. Any reproduction in part or whole without the written permission of Prolyte Group is prohibited.			FILE NO : 260030602		A3